



# KING TONY

## SAE & METRIC

1/4", 3/8", 1/2", 3/4", 1" DRIVE

- Star Sockets
- Deep Star Sockets
- Bit Sockets & Sets
- Bit Holders
- Impact Bit Sockets & Sets
- Impact Star Sockets
- Thin Wall Impact Sockets
- Punches & Punch Sets
- Second Cut Files & Sets
- Bits & Sets
- Power Bits
- Hex Keys & Sets
- Star L Wrenches & Sets





## 1/4" DRIVE STAR SOCKETS

### 1/4" Star Sockets



2375M

#### 2375M

##### 1/4" DR. STAR SOCKET 15/16"L

ITEM#	SIZE	LBS.	\$
237504M	E4	0.03	2.39
237505M	E5	0.04	2.39
237506M	E6	0.04	2.39
237507M	E7	0.04	2.39
237508M	E8	0.04	2.39



2275M

#### 2275M

##### 1/4" DR. DEEP STAR SOCKET 2"L

ITEM#	SIZE	LBS.	\$
227504M	E4	0.05	4.89
227505M	E5	0.05	4.89
227506M	E6	0.05	4.89
227507M	E7	0.05	4.89
227508M	E8	0.06	4.89



## 1/4" DRIVE BIT SOCKETS

### 1/4" Phillips Bit Sockets



2031

#### 2031

##### 1/4" DR. PHILLIPS BIT SOCKET 1-29/64"L

ITEM#	SIZE	LBS.	\$
203101	#1	0.03	2.68
203102	#2	0.03	2.68
203103	#3	0.03	2.68
203104	#4	0.04	2.68

### 1/4" Slotted Bit Sockets



2032

#### 2032

##### 1/4" DR. SLOTTED BIT SOCKET 1-29/64"L

ITEM#	SIZE	LBS.	\$
203204	5/32"x1/32"	0.03	2.68
203208	5/16"x3/64"	0.03	2.68
203210	26/64"x1/16"	0.03	2.68
203235	9/64"x1/64"	0.03	2.68
203255	7/32"x3/64"	0.04	2.68
203265	1/4"x3/64"	0.04	2.68

### 1/4" Star Bit Sockets



2033

#### 2033

##### 1/4" DR. STAR BIT SOCKET 1-29/64"L

ITEM#	SIZE	LBS.	\$
203308	T8	0.03	2.81
203309	T9	0.03	2.81
203310	T10	0.03	2.81
203315	T15	0.03	2.81
203320	T20	0.03	2.81
203325	T25	0.03	2.81
203327	T27	0.03	2.81
203330	T30	0.03	2.81
203340	T40	0.03	2.81

### 1/4" Hex Bit Sockets



2035

#### 2035

##### 1/4" DR. HEX BIT SOCKET 1-29/64"L

ITEM#	SIZE	LBS.	\$
203503	3MM	0.03	2.81
203504	4MM	0.03	2.81
203505	5MM	0.03	2.81
203506	6MM	0.03	2.81
203507	7MM	0.03	2.81
203508	8MM	0.03	2.81
203510	10MM	0.03	2.81





## 1/4" DRIVE ACCESSORIES

**1/4"** Accessories



2223

### 2223

1/4" DR. OFFSET EXTENSION BAR

ITEM#	SIZE	LBS.	\$
2223-02	2"	0.05	4.29
2223-04	4"	0.10	4.95



2311

### 2311

1/4" DR. FLEXIBLE EXTENSION BAR

ITEM#	SIZE	LBS.	\$
2311-06	6"	0.15	10.37
2311-12	12"	0.20	11.13
2311-18	18"	0.26	14.76



2178AE

### 2178AE

1/4" DR. SPINNER HANDLE POLYCARBONATES HANDLE

ITEM#	SIZE	LBS.	\$
2178AE	6"	0.17	6.25



2133DF

### 2133DF

1/4" DR. MAGNETIC NUT SPINNER 12"

ITEM#	SIZE	LBS.	\$
213312DF	12"	0.29	17.32



2177DF

### 2177DF

1/4" DR. SPINNER HANDLE RUBBER HANDLE

ITEM#	SIZE	LBS.	\$
2177DF	12-1/4"	0.28	14.05



2178TG

### 2178TG

1/4" DR. SPINNER HANDLE T-TYPE

ITEM#	SIZE	LBS.	\$
2178TG	6"	0.22	7.03



## 3/8" DRIVE SOCKETS

**3/8"** Universal Sockets

**New!**



3750

### 3750

3/8" DR. UNIVERSAL SOCKET SAE

ITEM#	SIZE	LBS.	\$
375012S	3/8"	0.14	14.44
375014S	7/16"	0.14	14.44
375016S	1/2"	0.14	14.56
375018S	9/16"	0.14	14.56
375020S	5/8"	0.12	14.56
375022S	11/16"	0.17	14.56
375024S	3/4"	0.19	14.91

3/8" DR. UNIVERSAL SOCKET METRIC

ITEM#	SIZE	LBS.	\$
375010M	10MM	0.13	14.26
375011M	11MM	0.13	14.26
375012M	12MM	0.13	14.44
375013M	13MM	0.13	14.44
375014M	14MM	0.13	14.56
375015M	15MM	0.14	14.85
375016M	16MM	0.14	14.85
375017M	17MM	0.15	15.33
375018M	18MM	0.15	15.87
375019M	19MM	0.16	15.87



## 3/8" DRIVE STAR SOCKETS

### 3/8" Standard Star Sockets



3375M

#### 3375M

##### 3/8" DR. STAR SOCKET 1-1/8"L

ITEM#	SIZE	LBS.	\$
337504M	E4	0.04	2.92
337505M	E5	0.04	2.92
337506M	E6	0.04	2.92
337507M	E7	0.05	2.92
337508M	E8	0.05	2.92
337510M	E10	0.05	2.92
337511M	E11	0.05	2.92
337512M	E12	0.06	2.92
337514M	E14	0.06	3.27
337516M	E16	0.09	3.57
337518M	E18	0.11	3.57

### 3/8" Deep Star Sockets



3275M

#### 3275M

##### 3/8" DR. DEEP STAR SOCKET 2-1/2"L

ITEM#	SIZE	LBS.	\$
327504M	E4	0.10	8.63
327505M	E5	0.11	8.63
327506M	E6	0.11	8.63
327507M	E7	0.11	8.63
327508M	E8	0.12	8.63
327510M	E10	0.13	8.76
327511M	E11	0.13	8.76
327512M	E12	0.14	8.76
327514M	E14	0.15	9.10
327516M	E16	0.19	9.58
327518M	E18	0.20	10.37

## 3/8" DRIVE BIT SOCKETS

### 3/8" Phillips Bit Sockets



3021

#### 3021

##### 3/8" DR. PHILLIPS BIT SOCKET 2"L

ITEM#	SIZE	LBS.	\$
302102	#2	0.08	3.15
302103	#3	0.08	3.15
302104	#4	0.08	3.15

### 3/8" Slotted Bit Sockets



3022

#### 3022

##### 3/8" DR. SLOTTED BIT SOCKET 2"L

ITEM#	SIZE	LBS.	\$
302205	13/64"x3/64"	0.08	3.15
302208	5/16"x3/64"	0.08	3.57
302210	25/64"x1/16"	0.08	3.81

### 3/8" Star Bit Sockets



3023

#### 3023

##### 3/8" DR. STAR BIT SOCKET 2"L

ITEM#	SIZE	LBS.	\$
302308	T8	0.06	3.46
302309	T9	0.06	3.46
302310	T10	0.06	3.15
302315	T15	0.06	3.15
302320	T20	0.07	3.15
302325	T25	0.07	3.15
302327	T27	0.08	3.15
302330	T30	0.08	3.15
302340	T40	0.09	3.15
302345	T45	0.09	3.57
302350	T50	0.09	3.57

### 3/8" Hex Bit Sockets



3025

#### 3025

##### 3/8" DR. HEX BIT SOCKET 2"L

ITEM#	SIZE	LBS.	\$
302503	H3	0.09	3.94
302504	H4	0.09	3.94
302505	H5	0.09	3.94
302506	H6	0.09	3.94
302507	H7	0.09	4.35
302508	H8	0.09	4.35
302510	H10	0.09	4.35
302512	H12	0.09	4.70

## 3/8" DRIVE ACCESSORIES

3/8" Accessories



3223

### 3223

#### 3/8" DR. OFFSET EXTENSION BAR

ITEM#	SIZE	LBS.	\$
3223-03	3"	0.17	5.48
3223-06	6"	0.32	7.56
3223-10	10"	0.53	11.25



3311

### 3311

#### 3/8" DR. FLEXIBLE EXTENSION BAR

ITEM#	SIZE	LBS.	\$
3311-06	6"	0.33	12.15
3311-12	12"	0.38	12.74

## 3/8" DRIVE BIT HOLDERS

3/8" Bit Holders



3148

### 3148

#### 3/8" DR. BIT HOLDER

ITEM#	SIZE	LBS.	\$
314808S	1/4"	0.07	5.13
314810S	5/16"	0.08	5.13
314810M	10MM	0.08	5.13

## 3/8" DRIVE SOCKET RAIL SET

3/8" 5PC. 3/8"+1/2" DR. RIBE BIT SOCKET RAIL SET

3105PR



3/8" Drive Ribe Bit Sockets  
M7 and M8  
1/2" Drive Bit Sockets  
M10, M12 and M13

1.65 LBS \$68.<sup>28</sup>

## 1/2" DRIVE STAR SOCKETS

1/2" Star Sockets



4375M

### 4375M

#### 1/2" DR. STAR SOCKET 1-29/64"L

ITEM#	SIZE	LBS.	\$
437510M	E10	0.13	5.37
437512M	E12	0.14	5.37
437514M	E14	0.14	5.37
437516M	E16	0.15	5.37

#### 1/2" DR. STAR SOCKET 1-9/16"L

ITEM#	SIZE	LBS.	\$
437518M	E18	0.16	5.37
437520M	E20	0.17	6.56



4275M

### 4275M

#### 1/2" DR. DEEP STAR SOCKET 3-1/16"L

ITEM#	SIZE	LBS.	\$
427510M	E10	0.24	11.79
427512M	E12	0.26	11.79
427514M	E14	0.28	11.79
427516M	E16	0.30	13.05
427518M	E18	0.33	13.05
427520M	E20	0.37	13.05

## 1/2" DRIVE BIT HOLDERS

1/2" Bit Holders



4148

### 4148

#### 1/2" DR. BIT HOLDER

ITEM#	SIZE	LBS.	\$
414808S	1/4"	0.11	6.25
414810S	5/16"	0.13	6.25
414810M	10MM	0.14	6.25



## 1/2" DRIVE BIT SOCKETS

1/2" Bit Sockets



4021

### 4021

#### 1/2" DR. PHILLIPS BIT SOCKET 2-3/8"L

ITEM#	SIZE	LBS.	\$
402102	No.2	0.17	8.04
402103	No.3	0.17	8.04
402104	No.4	0.17	8.04



4022

### 4022

#### 1/2" DR. SLOTTED BIT SOCKET 2-3/8"L

ITEM#	SIZE	LBS.	\$
402208	5/16x3/64"	0.17	8.04
402210	25/64x1/16"	0.18	9.10
402212	15/32x5/64"	0.24	9.58
402214	35/64x3/32"	0.25	10.18
402216	5/8x3/32"	0.25	10.18



4023

### 4023

#### 1/2" DR. STAR BIT SOCKET 2-3/8"L

ITEM#	SIZE	LBS.	\$
402320	T20	0.16	8.58
402325	T25	0.16	8.58
402327	T27	0.16	8.58
402330	T30	0.17	8.58
402340	T40	0.17	8.58
402345	T45	0.18	8.58
402350	T50	0.18	8.16
402355	T55	0.18	8.58
402360	T60	0.18	8.58
402370	T70	0.18	10.43



4033

### 4033

#### 1/2" DR. DEEP STAR BIT SOCKET 3-5/32"L

ITEM#	SIZE	LBS.	\$
403320	T20	0.18	9.47
403325	T25	0.18	9.47
403327	T27	0.18	9.47
403330	T30	0.18	9.47
403340	T40	0.19	9.47
403345	T45	0.22	9.47
403350	T50	0.25	9.47
403355	T55	0.29	10.84
403360	T60	0.26	11.43
403370	T70	0.31	12.59



## 1/2" DRIVE ACCESSORIES

1/2" Accessories



4221

### 4221

#### 1/2" DR. OFFSET EXTENSION BAR

ITEM#	SIZE	LBS.	\$
4221-18	18"	1.21	24.58
4221-24	24"	1.51	30.19
4221-30	30"	1.89	35.78
4221-36	36"	2.27	43.29



4223

### 4223

#### 1/2" DR. OFFSET EXTENSION BAR

ITEM#	SIZE	LBS.	\$
4223-02R	2"	0.21	8.63
4223-05R	5"	0.44	11.08
4223-10R	10"	0.79	15.95



## 1/2" DRIVE SOCKET RAIL SETS

### 1/2" 6PC. STAR SOCKET RAIL SET

4106PR

1.12 LBS **\$32.92**



1/2" Drive Star Sockets E10, E12, E14, E16, E18, E20

### 1/2" 8PC. SQUARE HEAD SOCKET RAIL SET 4PT METRIC

4118MR

1.26 LBS **\$44.29**



1/2" Drive Square Head Sockets 8, 9.5, 10, 10.5, 12, 12.7, 13.5, 19mm

## 1/2" DRIVE BIT SOCKET SETS

### 1/2" 6PC. RIBE BIT SOCKET RAIL SET

4116PR

1/2" Drive Ribe Bit Sockets  
M9, M10, M12, M13,  
M14, M16



0.84 LBS **\$94.66**

### 1/2" 9PC. HEX BIT SOCKET SET 6PT

4110PR

1/2" Drive Hexagon Head Bit  
Sockets 2-3/8"  
Length, 3, 4, 5, 6, 7, 8, 10,  
12, 14mm



2.27 LBS **\$71.81**

### 1/2" 9PC. TORX HEAD BIT SOCKET SET

4109PR

1/2" Drive Torx Head Bit  
Sockets 2-3/8" Length, T20,  
T25, T27, T30, T40, T45,  
T50, T55, T60



2.27 LBS **\$71.81**

### 1/2" 9PC. HEX DEEP BIT SOCKET SET 6PT

4120PR

1/2" Drive Hexagon Head  
Deep Bit Sockets 3-5/32"  
Length, 4, 5, 6, 7, 8, 10, 12,  
14, 17mm



3.04 LBS **\$81.97**

### 1/2" 9PC. TORX HEAD DEEP BIT SOCKET SET

4119PR

1/2" Drive Torx Head Deep  
Bit Sockets 3-5/32"  
Length, T20, T25, T27, T30,  
T40, T45, T50, T55, T60



3.04 LBS **\$81.97**

### 1/2" 8PC. SPLINE BIT SOCKET SET 12PT

4128PR

1/2" Drive Spline Bit Sockets  
2-3/8" Length M5, M6, M8,  
M10, M16 and 3-5/32"  
Length M8, M10, M12



2.43 LBS **\$80.97**

## 3/4" DRIVE ACCESSORY

### 3/4" Accessory



6581-18

**6581**

3/4" DR. 90° L-HANDLE

ITEM#	SIZE	LBS.	\$
6581-18	18"	0.97	42.15

## 1" DRIVE ACCESSORY

### 1" Accessory



8581-26

**8581**

1" DR. 90° L-HANDLE

ITEM#	SIZE	LBS.	\$
8581-26	26"	11.26	140.26



## 3/8" DRIVE IMPACT BIT SOCKETS

**3/8"** Impact Hex Bit Sockets

**New!**



3055

### 3055

3/8" DR. IMPACT HEX BIT SOCKET SAE 6PT

ITEM#	SIZE	LBS.	\$
305506S	3/16"	0.08	13.79
305507S	7/32"	0.08	13.79
305508S	1/4"	0.09	13.79
305510S	5/16"	0.10	14.09
305512S	3/8"	0.12	14.09
305516S	1/2"	0.15	15.82



## 1/2" DRIVE IMPACT SOCKETS

**1/2"** Super Thin Wall Impact Sockets



4415M

### 4415M

1/2" DR. SUPER THIN WALL IMPACT SOCKET METRIC 6PT

ITEM#	SIZE	LBS.	\$
441517M	17MM	0.52	18.52
441519M	19MM	0.55	18.52
441521M	21MM	0.55	18.52



## 1/2" DRIVE IMPACT STAR SOCKETS

**1/2"** Impact Star Sockets



4575M

### 4575M

1/2" DR. IMPACT STAR SOCKET 1-1/2"L

ITEM#	SIZE	LBS.	\$
457510M	E10	0.15	12.80
457512M	E12	0.15	12.80
457514M	E14	0.16	12.80
457516M	E16	0.17	12.80
457518M	E18	0.17	12.80
457520M	E20	0.26	15.18

**1/2"** Deep Thin Wall Impact Sockets



4935S

4935M

### 4935

1/2" DR. DEEP THIN WALL IMPACT SOCKET SAE 6PT

ITEM#	SIZE	LBS.	\$
493510S	5/16"	0.28	11.97
493512S	3/8"	0.32	11.97
493514S	7/16"	0.33	12.32
493516S	1/2"	0.35	12.32
493518S	9/16"	0.36	12.32
493520S	5/8"	0.37	14.10
493522S	11/16"	0.52	14.10
493524S	3/4"	0.56	14.10
493526S	13/16"	0.64	14.66
493528S	7/8"	0.68	15.95
493530S	15/16"	0.74	16.25
493532S	1"	0.78	17.01
493534S	1-1/16"	0.89	17.63
493536S	1-1/8"	0.91	18.87
493538S	1-3/16"	0.92	19.23
493540S	1-1/4"	0.93	19.23

1/2" DR. DEEP THIN WALL IMPACT SOCKET METRIC 6PT

ITEM#	SIZE	LBS.	\$
493510M	10MM	0.30	12.32
493511M	11MM	0.32	12.32
493512M	12MM	0.35	12.32
493513M	13MM	0.35	12.32
493514M	14MM	0.38	12.32
493516M	16MM	0.48	14.10
493517M	17MM	0.50	14.10
493519M	19MM	0.52	14.10
493521M	21MM	0.55	14.66
493522M	22MM	0.52	15.95
493523M	23MM	0.53	16.25
493524M	24MM	0.55	16.25
493526M	26MM	0.65	17.39
493527M	27MM	0.66	17.63
493530M	30MM	0.68	19.23





## 1/2" DRIVE IMPACT BIT SOCKETS

1/2" Impact Bit Sockets



4053

### 4053

1/2" DR. IMPACT TORX BIT SOCKET 2-3/8"L

ITEM#	SIZE	LBS.	\$
405325	T25	0.16	20.42
405327	T27	0.16	20.42
405330	T30	0.16	20.42
405340	T40	0.19	22.68
405345	T45	0.20	22.68
405350	T50	0.21	22.68
405355	T55	0.22	25.07
405360	T60	0.23	25.07



4015M

### 4015M

1/2" DR. IMPACT HEX BIT SOCKET METRIC 3-5/32"L

ITEM#	SIZE	LBS.	\$
401506M	6MM	0.19	19.46
401508M	8MM	0.21	20.84
401510M	10MM	0.30	20.84
401512M	12MM	0.32	23.32
401513M	13MM	0.34	23.32
401514M	14MM	0.36	23.32
401517M	17MM	0.55	24.42
401519M	19MM	0.63	24.42



## 1/2" DRIVE IMPACT ACCESSORIES

1/2" Impact Accessories



4147

### 4147

1/2" DR. IMPACT BIT HOLDER

ITEM#	SIZE	LBS.	\$
414708S	1/4"	0.15	11.08
414710S	5/16"	0.15	11.08
414710M	10MM	0.16	11.79



## 1/2" DRIVE IMPACT SOCKET SETS

1/2" 8PC. THIN WALL IMPACT SOCKET SET METRIC 6PT

4413MP



1/2" Drive Thin Wall Impact Sockets 6pt. 10, 12, 13, 14, 17, 19, 21, 24mm

3.31 LBS \$73.<sup>65</sup>



## 1/2" DRIVE IMPACT BIT SOCKET SETS

1/2" 7PC. IMPACT TORX BIT SOCKET SET

4417PP



1/2" Drive Impact Torx Bit Sockets T25, T30, T40, T45, T50, T55, T60

2.07 LBS \$169.<sup>44</sup>

1/2" 7PC. IMPACT HEX BIT SOCKET SET METRIC

4407MP



1/2" Drive Impact Hex Bit Sockets 4, 5, 6, 8, 10, 12, 14mm

2.07 LBS \$138.<sup>18</sup>

1/2" 7PC. DEEP IMPACT TORX BIT SOCKET SET

4467PP



1/2" Drive Deep Impact Torx Bit Sockets T25, T30, T40, T45, T50, T55, T60

2.89 LBS \$160.<sup>63</sup>

1/2" 7PC. DEEP IMPACT HEX BIT SOCKET SET METRIC

4457MP



1/2" Drive Deep Impact Hex Bit Sockets 4, 5, 6, 8, 10, 12, 14mm

2.89 LBS \$177.<sup>48</sup>

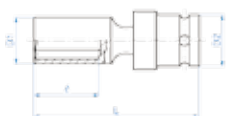




## 1/2" IMPACT UNIVERSAL SOCKETS

1/2" Impact Universal Sockets

**New!**



Deep Version



Standard Length



### 4A55

#### 1/2" DR. DEEP IMPACT UNIVERSAL SOCKET 6PT

ITEM#	SIZE	LBS.	\$
4A5512S	3/8"	0.43	21.82
4A5514S	7/16"	0.46	21.82
4A5516S	1/2"	0.46	20.50
4A5518S	9/16"	0.48	21.20
4A5520S	5/8"	0.52	21.20
4A5522S	11/16"	0.57	21.50
4A5524S	3/4"	0.57	21.85
4A5526S	13/16"	0.60	22.90
4A5528S	7/8"	0.61	23.55
4A5530S	15/16"	0.68	24.20

### 4B55

#### 1/2" DR. IMPACT UNIVERSAL SOCKET 6PT

ITEM#	SIZE	LBS.	\$
4B5512S	3/8"	0.35	17.15
4B5514S	7/16"	0.37	17.15
4B5516S	1/2"	0.39	17.80
4B5518S	9/16"	0.38	18.80
4B5520S	5/8"	0.40	18.80
4B5522S	11/16"	0.40	19.15
4B5524S	3/4"	0.41	20.20
4B5526S	13/16"	0.42	20.85
4B5528S	7/8"	0.43	21.00
4B5530S	15/16"	0.48	21.85



## 1/2" IMPACT UNIVERSAL SOCKET SETS

1/2" 10PC. DEEP IMPACT UNIVERSAL SOCKET SETS SAE 6PT

**New!**

4440SP



1/2" Deep Impact Universal Sockets 3/8", 7/16", 1/2", 9/16", 5/8", 11/16", 3/4", 3/16", 7/8", 5/16"

6.95 LBS **\$234.<sup>58</sup>**

1/2" 10PC. IMPACT UNIVERSAL SOCKET SAE 6PT

**New!**

4450SP



1/2" Impact Universal Sockets 3/8", 7/16", 1/2", 9/16", 5/8", 11/16", 3/4", 3/16", 7/8", 5/16"

5.95 LBS **\$207.<sup>68</sup>**





## 3/4" DRIVE IMPACT SOCKETS

3/4" Deep Thin Wall Impact Sockets



6935S

6935M

### 6935

3/4" DR. DEEP THIN WALL IMPACT SOCKET SAE 6PT

ITEM#	SIZE	LBS.	\$
693524S	3/4"	0.81	29.83
693526S	13/16"	0.84	29.83
693528S	7/8"	0.85	29.83
693530S	15/16"	0.91	29.83
693532S	1"	1.10	29.83
693534S	1-1/16"	1.44	37.34
693536S	1-1/8"	1.50	38.16
693538S	1-3/16"	1.50	38.23
693540S	1-1/4"	1.61	39.36

3/4" DR. DEEP THIN WALL IMPACT SOCKET METRIC 6PT

ITEM#	SIZE	LBS.	\$
693519M	19MM	1.24	36.44
693521M	21MM	1.31	36.49
693522M	22MM	1.35	36.49
693523M	23MM	1.35	36.49
693524M	24MM	1.36	36.49
693526M	26MM	1.38	36.49
693527M	27MM	1.39	37.34
693529M	29MM	1.48	38.16
693530M	30MM	1.52	38.23
693532M	32MM	1.61	39.36



## 3/4" DRIVE IMPACT BIT SOCKETS

3/4" Impact Bit Sockets



6015M

### 6015M

3/4" DR. IMPACT HEX BIT SOCKET 3-7/16"L

ITEM#	SIZE	LBS.	\$
601514M	14MM	0.72	36.56
601517M	17MM	0.75	36.56
601519M	19MM	0.80	36.56
601521M	21MM	1.08	36.56
601522M	22MM	1.15	36.56
601524M	24MM	1.22	43.39
601527M	27MM	1.33	43.39



1740H

### 1740H

IMPACT HEX BIT 1-9/16"L

ITEM#	SIZE	LBS.	\$
174010H	10MM	0.10	8.22
174012H	12MM	0.11	8.45
174014H	14MM	0.13	8.56
174017H	17MM	0.16	8.93
174019H	19MM	0.18	9.71
174022H	22MM	0.21	10.55



609616M

### 609616M

3/4" DR. IMPACT BIT HOLDER 2-1/16"L

ITEM#	SIZE	LBS.	\$
609616M	16MM	0.81	22.86



6085

### 6085

3/4" DR. IMPACT HEX BIT SOCKET 3-1/32"L

ITEM#	SIZE	LBS.	\$
608510	10MM	0.92	31.08
608512	12MM	0.93	31.14
608514	14MM	0.95	31.80
608517	17MM	0.97	31.80
608519	19MM	0.99	32.57
608522	22MM	1.04	32.57





## PUNCHES

### Punches



761

## 761

### CENTER PUNCH

ITEM#	SIZE	LBS.	\$
76103-04	3x100MM	0.07	5.37
76104-05	4x120MM	0.13	5.53
76105-06	5x150MM	0.26	5.66



762

## 762

### FLAT CHISEL

ITEM#	SIZE	LBS.	\$
76213-04	13x100MM	0.15	6.56
76215-05	15x125MM	0.15	7.32
76217-06	17x150MM	0.32	8.04
76220-07	20x175MM	0.66	8.69
76223-08	23x200MM	0.66	10.05
76224-10	24x250MM	0.85	11.56
76226-12	26x300MM	1.43	16.14



763

## 763

### STARTER PUNCH

ITEM#	SIZE	LBS.	\$
76301-05	1x120MM	0.13	5.37
76302-05	2x120MM	0.13	5.53
76303-05	3x120MM	0.13	5.66
76304-05	4x120MM	0.13	6.56
76305-05	5x120MM	0.14	7.32
76306-05	6x120MM	0.14	8.04
76307-05	7x120MM	0.22	8.69
76308-05	8x120MM	0.22	10.05
76309-06	9x150MM	0.29	11.56
76310-06	10x150MM	0.26	16.14



764

## 764

### PIN PUNCH

ITEM#	SIZE	LBS.	\$
76402-45	2x30MM 115MM	0.07	6.08
76403-05	3x40MM 125MM	0.07	6.08
76404-06	4x50MM 150MM	0.13	6.79
76405-65	5x55MM 165MM	0.16	7.20
76406-07	6x55MM 180MM	0.28	7.92
76408-08	8x60MM 200MM	0.29	8.22
76410-85	10x65MM 215MM	0.34	12.63
76412-09	12x70MM 230MM	0.78	15.61
76414-10	14x75MM 250MM	1.10	19.89



## PUNCH SETS

### 6PC. PIN PUNCH SET

1006PR



Pin Punch 2x30mm, 3x40mm, 4x50mm, 5x55mm, 6x55mm, 8x60mm

1.26 LBS **\$46.<sup>08</sup>**

### 9PC. PIN PUNCH SET

1009PR



Pin Punch 2x30mm, 3x40mm, 4x50mm, 5x55mm, 6x55mm, 8x60mm, 10x65mm, 12x70mm, 14x75mm

3.68 LBS **\$87.<sup>46</sup>**

### 10PC. PIN+CENTER+STARTER PUNCH SET

1010PR



Pin Punch 2x30mm, 4x50mm, 5x55mm, 6x55mm  
Center Punch 3x100mm, 4x120mm, 5x150mm  
Starter Punch 3x120mm, 6x120mm, 8x120mm

1.61 LBS **\$69.<sup>71</sup>**



## BIT HOLDER

### 1/4" Magnetic Bit Holder

**New!**



750

## 750

### 1/4" DR. 2PC. TYPE MAGNETIC BIT HOLDER HEX 60MML

ITEM#	SIZE	LBS.	\$
750-60	1/4"	0.05	4.54





## FILE HANDLES

### Flat Files

**New!**



75102

**New!**



75102G

### 75102

#### FLAT FILES WITHOUT HANDLE

ITEM#	SIZE	LBS.	\$
75102-08	8"	0.32	6.69
75102-10	10"	0.51	8.62

#### FLAT FILES W/HANDLE

ITEM#	SIZE	LBS.	\$
75102-08G	8"	0.43	11.90
75102-10G	10"	0.62	14.03

### Half-Round Files

**New!**



75202

**New!**



75202G

### 75202

#### HALF-ROUND FILES WITHOUT HANDLE

ITEM#	SIZE	LBS.	\$
75202-08	8"	0.28	8.46
75202-10	10"	0.54	9.30

#### HALF-ROUND FILES W/HANDLE

ITEM#	SIZE	LBS.	\$
75202-08G	8"	0.39	14.73
75202-10G	10"	0.65	16.17

### Round Files

**New!**



75302

**New!**



75302G

### 75302

#### ROUND FILES WITHOUT HANDLE

ITEM#	SIZE	LBS.	\$
75302-08	8"	0.14	5.13
75302-10	10"	0.27	6.93

#### ROUND FILES W/HANDLE

ITEM#	SIZE	LBS.	\$
75302-08G	8"	0.25	10.05
75302-10G	10"	0.38	12.53

### Triangular Files

**New!**



75402

**New!**



75402G

### 75402

#### TRIANGULAR FILES WITHOUT HANDLE

ITEM#	SIZE	LBS.	\$
75402-08	8"	0.25	6.60
75402-10	10"	0.48	8.62

#### TRIANGULAR FILES W/HANDLE

ITEM#	SIZE	LBS.	\$
75402-08G	8"	0.37	13.38
75402-10G	10"	0.60	14.28

### Square Files

**New!**



75502

**New!**



75502G

### 75502

#### SQUARE FILES WITHOUT HANDLE

ITEM#	SIZE	LBS.	\$
75502-08	8"	0.16	5.99
75502-10	10"	0.31	7.55

#### SQUARE FILES W/HANDLE

ITEM#	SIZE	LBS.	\$
75502-08G	8"	0.28	11.90
75502-10G	10"	0.42	13.46





## SECOND CUT FILE SETS

### 5PC. SECOND CUT FILES SET W/O HANDLES 8"

1005ZQ



Second Cut Files 8" Length  
Flat, Half Round, Round,  
Square, Triangle W/O Handle

1.21 LBS **\$40.<sup>66</sup>**

### 5PC. SECOND CUT FILES SET WITH HANDLES 8"

1005GQ



Second Cut Files 8" Length  
Flat, Half Round, Round,  
Square, Triangle W/Handle

1.76 LBS **\$85.<sup>86</sup>**

### 5PC. SECOND CUT FILES SET W/O HANDLES 10"

1015ZQ



Second Cut Files 10" Length  
Flat, Half Round, Round,  
Square, Triangle W/O Handle

2.15 LBS **\$52.<sup>81</sup>**

### 5PC. SECOND CUT FILES SET WITH HANDLES 10"

1015GQ



Second Cut Files 10" Length  
Flat, Half Round, Round,  
Square, Triangle W/Handle

2.70 LBS **\$97.<sup>52</sup>**

### Second Cut File Handles



91248/91249

**91248/91249**

#### SECOND CUT FILE HANDLES

ITEM#	SIZE	LBS.	\$
91248	8" 4-7/8"	0.15	7.94
91249	10" 4-7/8"	0.15	7.94



## FLAT CHISEL SET

### 4PC. FLAT CHISEL SET

11104PR10



Flat Chisel 5", 6", 8", 10"

2.12 LBS **\$62.<sup>39</sup>**





1025P

**1025P**

1/4" PHILLIPS HEAD BIT 25MML

ITEM#	SIZE	MIN. PACKAGE	LBS.	\$
102500P	#0	20	0.20	1.19
102501P	#1	20	0.20	1.19
102502P	#2	20	0.20	1.19
102503P	#3	20	0.20	1.19



1025R

**1025R**

1/4" SQUARE HEAD BIT 25MML

ITEM#	SIZE	MIN. PACKAGE	LBS.	\$
102500R	#0	20	0.20	1.19
102501R	#1	20	0.20	1.19
102502R	#2	20	0.20	1.19
102503R	#3	20	0.20	1.19



102512P

**102512P**

1/4" PHILLIPS HEAD DRYWALL TYPE BIT

ITEM#	SIZE	MIN. PACKAGE	LBS.	\$
102512P	#2 25MM	20	0.20	1.19



1025Z

**1025Z**

1/4" POZIDRIV TYPE BIT 25MML

ITEM#	SIZE	MIN. PACKAGE	LBS.	\$
102501Z	#1	20	0.20	1.19
102502Z	#2	20	0.20	1.19
102503Z	#3	20	0.20	1.19



1025S

**1025S**

1/4" SLOTTED HEAD BIT 25MML

ITEM#	SIZE	MIN. PACKAGE	LBS.	\$
102503S1	3.0x0.5MM	20	0.20	1.19
102535S1	3.5x0.6MM	20	0.20	1.19
102504S1	4.0x0.5MM	20	0.20	1.19
102504S2	4.0x0.8MM	20	0.20	1.19
102545S1	4.5x0.6MM	20	0.20	1.19
102505S1	5.0x0.8MM	20	0.20	1.19
102555S1	5.5x0.8MM	20	0.20	1.19
102555S2	5.5x1.0MM	20	0.20	1.19
102506S1	6.0x1.0MM	20	0.20	1.19
102565S1	6.5x1.2MM	20	0.20	1.19
102507S1	7.0x1.2MM	20	0.20	1.19
102508S1	8.0x1.2MM	20	0.20	1.19
102508S2	8.0x1.6MM	20	0.20	1.19



1025U

**1025U**

1/4" TORX HEAD TAMPER RESISTANT TYPE BIT 25MML

ITEM#	SIZE	MIN. PACKAGE	LBS.	\$
102507U	T7	20	0.20	1.53
102508U	T8	20	0.20	1.53
102509U	T9	20	0.20	1.53
102510U	T10	20	0.20	1.53
102515U	T15	20	0.20	1.53
102520U	T20	20	0.20	1.53
102525U	T25	20	0.20	1.53
102527U	T27	20	0.20	1.53
102530U	T30	20	0.20	1.53
102540U	T40	20	0.20	1.53



1025T

**1025T**

1/4" TORX HEAD BITS 25MML

ITEM#	SIZE	MIN. PACKAGE	LBS.	\$
102506T	T6	20	0.20	1.53
102507T	T7	20	0.20	1.53
102508T	T8	20	0.20	1.53
102509T	T9	20	0.20	1.53
102510T	T10	20	0.20	1.53
102515T	T15	20	0.20	1.53
102520T	T20	20	0.20	1.53
102525T	T25	20	0.20	1.53
102527T	T27	20	0.20	1.53
102530T	T30	20	0.20	1.53
102540T	T40	20	0.20	1.53





## BIT SETS

### 1/4" 50PC. HEX SIZE SHANK DRIVER BITS SET

1050CQ



1.10 LBS \$60.<sup>31</sup>

1/4" Drive Slotted Head Bits 4.0, 5.5, 6.5 for 2pcs of each  
Phillips Head Bits 1, 2, 3 for 2pcs of each  
Pozidriv 1, 2, 3 for 2pcs of each  
Torx Head Bits T6, T7, T8, T9, T10, T15, T20, T25, T27, T30, T40x2pcs  
Hex Bits H2, H3, H4, H5, H6, H7, H8  
Torx Head Screw Bits T7, T8, T9, T10, T15, T20, T25, T27, T30, T40x2pcs  
Magnetic Bit Holder 1/4", Bit Adapter

### 1/4" 7PC. TAMPER RESISTANT BITS & L-TYPE HOLDER SET

2138PR



0.52 LBS \$15.<sup>06</sup>

Tamper Resistant Bits 2, 3, 4, 5, 6, 7, 8mm  
L-Type Holder

### 1/4" 3PC. HEXAGON HEAD BITS SET

**New!**

1003MQ



0.05 LBS \$1.<sup>67</sup>

1/4" Hexagon Head Bits  
25mm Length  
4, 5, 6mm

### 1/4" 3PC. SLOTTED HEAD BITS SET

**New!**

1003LQ



0.05 LBS \$2.<sup>21</sup>

1/4" Slotted Head Bits  
25mm Length  
4.5x0.6mm, 6.5x1.2mm,  
8.0x1.2mm

### 1/4" 3PC. PHILLIPS HEAD BITS SET

**New!**

1003PQ



0.05 LBS \$1.<sup>67</sup>

1/4" Phillips Head Bits  
25mm Length  
#1, #2, #3

### 1/4" 3PC. POZIDRIV HEAD BITS SET

**New!**

1003ZQ



0.05 LBS \$1.<sup>67</sup>

1/4" Pozidriv Head Bits  
25mm Length  
#1, #2, #3

### 1/4" 3PC. TORX HEAD BITS SET

**New!**

1003TQ



0.05 LBS \$2.<sup>00</sup>

1/4" Torx Head Bits  
25mm Length  
T8, T10, T15

### 1/4" 3PC. TORX HEAD BITS SET

**New!**

1003TQ01



0.05 LBS \$2.<sup>00</sup>

1/4" Torx Head Bits  
25mm Length  
T20, T25, T30





## POWER BITS

### Double End Power Bits



7300PP

### 7300PP

#### 1/4" DOUBLE PHILLIPS HEAD LONG POWER BITS

ITEM#	SIZE	MIN. PACKAGE	LBS.	\$
734501P	#1 45MM	10	0.20	1.49
734502P	#2 45MM	10	0.20	1.49
734503P	#3 45MM	10	0.20	1.49
736501P	#1 65MM	10	0.30	1.90
736502P	#2 65MM	10	0.30	1.90
736503P	#3 65MM	10	0.30	1.90
731101P	#1 110MM	10	0.60	2.32
731102P	#2 110MM	10	0.60	2.32
731103P	#3 110MM	10	0.60	2.32
731502P	#2 150MM	10	0.70	2.86
731503P	#3 150MM	10	0.70	2.86



7400PP

### 7400PP

#### 1/4" DOUBLE PHILLIPS HEAD SHORT POWER BITS

ITEM#	SIZE	MIN. PACKAGE	LBS.	\$
745002P	#2 50MM	10	0.20	1.56
747502P	#2 75MM	10	0.30	1.90
747503P	#3 75MM	10	0.40	1.90
741002P	#2 100MM	10	0.50	2.27
741502P	#2 150MM	10	0.80	2.80



1300PN

### 1300PN

#### 1/4" LONG HEAD DOUBLE END POWER BITS

ITEM#	SIZE	MIN. PACKAGE	LBS.	\$
134501P	#1 45MM	10	0.20	1.97
134502P	#2 45MM	10	0.20	1.97
134503P	#3 45MM	10	0.20	1.97
136501P	#1 65MM	10	0.30	2.56
136502P	#2 65MM	10	0.30	2.56
136503P	#3 65MM	10	0.30	2.56
131101P	#1 110MM	10	0.60	3.15
131102P	#2 110MM	10	0.60	3.15



## HEX KEYS

### Hex Keys



1145M

### 1145M

#### SHORT ARM HEX KEY WITH ALLEN HEAD SATIN

ITEM#	SIZE	LBS.	\$
114515M	1.5MM	0.01	1.84
114502M	2MM	0.01	2.04
114525M	2.5MM	0.01	2.10
114503M	3MM	0.01	2.20
114504M	4MM	0.01	2.34
114505M	5MM	0.03	3.01
114555M	5.5MM	0.05	3.22
114506M	6MM	0.06	3.33
114507M	7MM	0.09	3.47
114508M	8MM	0.13	3.73
114510M	10MM	0.23	5.11



1125

### 1125

#### EXTRA LONG HEX KEY WITH ALLEN HEAD SATIN

ITEM#	SIZE	LBS.	\$
112504S	1/8"	0.17	3.47
112505S	5/32"	0.04	3.63
112506S	3/16"	0.06	3.78
112508S	1/4"	0.11	4.34
112510S	5/16"	0.22	5.82
112512S	3/8"	0.40	8.12
112516S	1/2"	0.63	14.25
112518S	9/16"	0.99	18.63

#### EXTRA LONG HEX KEY WITH ALLEN HEAD SATIN

ITEM#	SIZE	LBS.	\$
112515M	1.5MM	0.01	2.71
112502M	2MM	0.01	3.01
112525M	2.5MM	0.01	3.26
112503M	3MM	0.01	3.63
112504M	4MM	0.03	3.63
112505M	5MM	0.07	3.86
112506M	6MM	0.11	4.31
112507M	7MM	0.17	4.88
112508M	8MM	0.22	5.84
112510M	10MM	0.40	8.16
112512M	12MM	0.63	14.96
112514M	14MM	0.99	19.80
112517M	17MM	1.69	24.66
112519M	19MM	1.89	34.91





## HEX KEY SETS

### 8PC. HEX KEY SET CHROME 2-10MM KNIFE TYPE METRIC

20218MR



Hex Key 2, 2.5, 3, 4, 5, 6, 8, 10mm

0.73 LBS \$22.<sup>45</sup>

### 10PC. EXTRA LONG HEX KEY SET 3-17MM METRIC W/METAL BOX

20210MR



Extra Long Arm Hex Key 3, 4, 5, 6, 7, 8, 10, 12, 14, 17mm

1.04 LBS \$100.<sup>36</sup>

### 9PC. HEX KEY SET 1.5-10MM METRIC

20219MR



Hex Key 1.5, 2, 2.5, 3, 4, 5, 6, 8, 10mm

0.73 LBS \$25.<sup>52</sup>

### 8PC. EXTRA LONG HEX KEY SET 1/8"-9/16" SAE W/TRAY

20208SR01



Extra Long Arm Hex Key 1/8", 5/32", 3/16", 1/4", 5/16", 3/8", 1/2", 9/16"

2.76 LBS \$55.<sup>17</sup>

### 8PC. EXTRA LONG HEX KEY SET 2-10MM METRIC

20208MR



Extra Long Arm Hex Key 2, 2.5, 3, 4, 5, 6, 8, 10mm

0.95 LBS \$28.<sup>86</sup>

### 8PC. EXTRA LONG HEX KEY SET 3-14MM METRIC W/TRAY

20208MR01



Extra Long Arm Hex Key 3, 4, 5, 6, 8, 10, 12, 14mm

2.76 LBS \$55.<sup>17</sup>

### 9PC. EXTRA LONG HEX KEY SET 1.5-10MM METRIC

20209MR



Extra Long Arm Hex Key 1.5, 2, 2.5, 3, 4, 5, 6, 8, 10mm

0.97 LBS \$29.<sup>99</sup>





## BALL HEX KEYS

Ball Hex Key



1130

### 1130

#### LONG ARM HEX KEY WITH BALL POINT SAE SATIN

ITEM#	SIZE	LBS.	\$
113003S	3/32"	0.01	3.26
113004S	1/8"	0.01	3.37
113005S	5/32"	0.03	3.37
113006S	3/16"	0.05	3.63
113007S	7/32"	0.07	3.99
113008S	1/4"	0.09	4.08
113010S	5/16"	0.18	5.67
113012S	3/8"	0.30	7.96

#### LONG ARM HEX KEY WITH BALL POINT METRIC SATIN

ITEM#	SIZE	LBS.	\$
113015M	1.5MM	0.01	2.81
113002M	2MM	0.01	3.07
113025M	2.5MM	0.01	3.22
113003M	3MM	0.01	3.33
113004M	4MM	0.03	3.47
113005M	5MM	0.05	3.78
113006M	6MM	0.09	4.04
113008M	8MM	0.18	5.57
113010M	10MM	0.31	8.12



## STAR L-WRENCHES

Star L-wrenches



1143

### 1143

#### STAR L-WRENCH SATIN

ITEM#	SIZE	LBS.	\$
114310	T10	0.01	2.48
114315	T15	0.01	2.68
114320	T20	0.01	2.68
114325	T25	0.02	2.68
114327	T27	0.03	2.68
114330	T30	0.05	2.87
114340	T40	0.08	3.11
114345	T45	0.12	3.88
114350	T50	0.17	4.53



1147

### 1147

#### STAR L-WRENCH TAMPER RESISTANT TYPE SATIN

ITEM#	SIZE	LBS.	\$
114710	T10	0.01	2.87
114715	T15	0.01	2.87
114720	T20	0.01	2.92
114725	T25	0.02	3.11
114727	T27	0.03	3.11
114730	T30	0.05	3.11
114740	T40	0.08	3.40
114745	T45	0.12	4.14
114750	T50	0.17	4.76



## BALL HEX KEY SETS

7PC. LONG ARM BALL POINT HEX KEY SET 3/32"-3/8" SAE

20107SR



Long Arm With Ball Hex Key 3/32", 1/8", 5/32", 3/16", 1/4", 5/16", 3/8"

0.79 LBS \$26.<sup>08</sup>

7PC. LONG ARM BALL POINT HEX KEY SET 2.5-10MM METRIC

20107MR01



Long Arm With Ball Hex Key 2.5, 3, 4, 5, 6, 8, 10mm

0.81 LBS \$26.<sup>08</sup>

8PC. EXTRA LONG BALL POINT HEX KEY SET 2-10MM METRIC

20108MR



Extra Long Arm With Ball Hex Key 2, 2.5, 3, 4, 5, 6, 8, 10mm

0.95 LBS \$31.<sup>75</sup>

9PC. EXTRA LONG BALL POINT HEX KEY SET 1.5-10MM METRIC

20109MR



Extra Long Arm With Ball Hex Key 1.5, 2, 2.5, 3, 4, 5, 6, 8, 10mm

0.97 LBS \$34.<sup>02</sup>





## L-WRENCH SETS

### 8PC. STAR WRENCH SET T9-T40 KNIFE TYPE

20308PR



Star L-wrench Standard Torx Head T9, T10, T15, T20, T25, T27, T30, T40

0.44 LBS \$20.<sup>41</sup>

### 9PC. STAR WRENCH SET W/TAMPER RESISTANT T10-T50

20409PR



Star L-wrench Standard Torx Head Tamper Resistant Type T10, T15, T20, T25, T27, T30, T40, T45, T50

0.44 LBS \$22.<sup>68</sup>

### 9PC. STAR WRENCH SET T10-T50

20309PR



Star L-wrench Standard Torx Head T10, T15, T20, T25, T27, T30, T40, T45, T50

0.66 LBS \$22.<sup>68</sup>

### 9PC. EXTRA LONG STAR WRENCH SET W/TAMPER RESISTANT T10-T50

20419PR



Star L-wrench Extra Long Torx Head Tamper Resistant Type T10, T15, T20, T25, T27, T30, T40, T45, T50

0.99 LBS \$35.<sup>73</sup>

### 9PC. EXTRA LONG STAR WRENCH SET T10-T50

20319PR



Star L-wrench Extra Long Torx Head T10, T15, T20, T25, T27, T30, T40, T45, T50

0.99 LBS \$35.<sup>73</sup>

### 6PC. L-HANDLE BALL POINT HEX KEY SET 3-8MM METRIC

22106MR



L-type Hexagon With Ball Point Head Wrenches 3, 4, 5, 6, 7, 8mm

1.50 LBS \$55.<sup>39</sup>

### 7PC. STAR WRENCH SET T10-T40

20307PR



Star L-wrench Standard Torx Head T10, T15, T20, T25, T27, T30, T40

0.29 LBS \$15.<sup>88</sup>

### 6PC. L-HANDLE TORX HEX KEY SET T10-T40

22306PR



L-type Torx Head With Tamper Resistant Type Wrenches T10, T15, T20, T25, T30, T40

1.01 LBS \$53.<sup>16</sup>

### 7PC. STAR WRENCH SET W/TAMPER RESISTANT T10-T40

20407PR



Star L-wrench Standard Torx Head Tamper Resistant Type T10, T15, T20, T25, T27, T30, T40

0.29 LBS \$17.<sup>58</sup>

### 8PC. L-HANDLE HEX KEY SET 2-10MM METRIC

22208MR



L-type Hexagon Head Wrenches 2, 2.5, 3, 4, 5, 6, 8, 10mm

2.14 LBS \$68.<sup>55</sup>

